

2023 /  
2024



# ANNUAL REPORT



Year in review.

# TABLE OF CONTENTS

- 1** Message from Executive Director
- 2** Meet the Team
- 3** Impact of Services
- 4** Sexual Assault Nurse Examiner (SANE) Program
- 5** Demographics & Prevention
- 6** Financials
- 7** Get Involved

# A WORD FROM OUR EXECUTIVE DIRECTOR



Dear Friends,

Thank you for making the Southeast Alabama Child Advocacy Center's 30th Anniversary possible! This year, we took the time to celebrate three decades of service to our community, providing a collaborative and multidisciplinary approach to protect children and prevent abuse. Together with our dedicated partners, we've been able to serve thousands of children and families, and for that, we are deeply grateful.

We owe so much to our founders, visionaries, donors, partners, and—most importantly—our staff and the children and families we serve. Your unwavering support has made our work possible and continues to fuel our mission.

At Southeast Alabama CAC, we remain committed to offering children and families high-quality, trauma-informed services. This commitment is at the heart of our strategic planning process, guiding our efforts as we set goals for the future. As we look ahead, we're focused on:

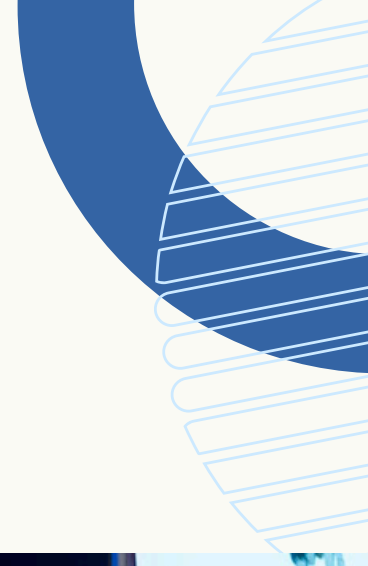
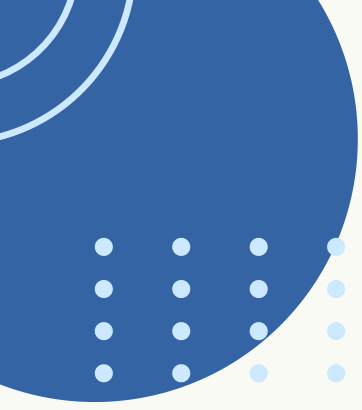
- Expanding our Sexual Assault Nurse Examiner (SANE) Program to provide 24/7 forensic medical care for children.
- Strengthening and growing our child abuse prevention education programs for adults in the community.
- Exceeding the accreditation standards of the National Children's Alliance, ensuring that we continue to provide the highest level of care and support.

Your investment in our work is vital. You are a critical part of protecting children and their families, and together, we are working towards creating a world where child abuse no longer exists.

For the Kids!

**TERRI DUBOSE**

Executive Director



**30TH ANNIVERSARY BLUE TIE DINNER  
FEATURING ERIN'S LAW FOUNDER, ERIN MERRYIN**

# MEET THE TEAM



Terri DuBose, Executive Director  
Jennifer Kennedy, Victim Services Advocate  
Lynette Celis, Bilingual Forensic Interviewer  
Shelby Marsh, Forensic Interviewer  
Laura Bertagnolli, Therapist  
Aline Mays-Easley, Therapist

Emily Woodall, Education Advocate  
Laurabeth Ross, Community Advocate  
ShanKrystal McCaulley, MDT Coordinator  
Melissa Maddox - SANE Nurse Coordinator  
Madison Hobbs, Child Advocate

## EXECUTIVE BOARD OF DIRECTORS

Mike Martin, President  
Karen Morris, Vice President  
Neil Guess, Secretary  
Gunter Price, Treasurer

Heidi Condrey  
Melanie Cotter, PhD  
Emily Darnell  
Lori Johnson

Ken Lane  
Keith Saulsberry  
Ron Watts  
Carolyn West

### ADVISORY BOARD:

Scott Applefield  
Deborah Crawford  
Sarah Germanson, MD

# IMPACT OF SERVICES



# 634

CLIENTS SERVED



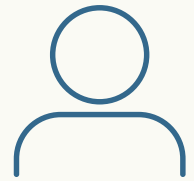
Forensic Interviews

354



Crisis Intervention Services

45



New Therapy Clients

98



Hours of Trauma-Focused Therapy

748



Services Provided with Translation

24



Criminal Justice Support Services

5,015

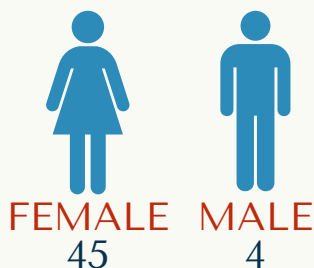
# 2024 SPRING FLING



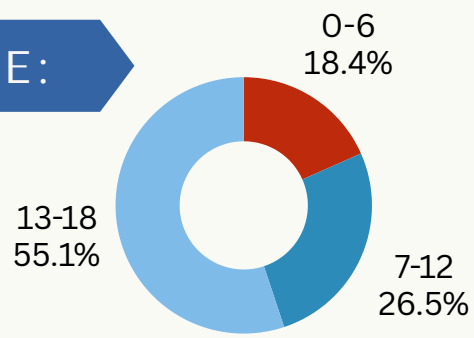
# SEXUAL ASSAULT NURSE EXAMINER PROGRAM

# 49

## SANE EXAMS



AGE:



## Presentations & Trainings:

- Police Department - 8
- Hospitals - 5
- Clinics - 4
- Fire/EMS - 6
- DHR - 4
- Lunch and Learn - 1
- Health Fair - 2

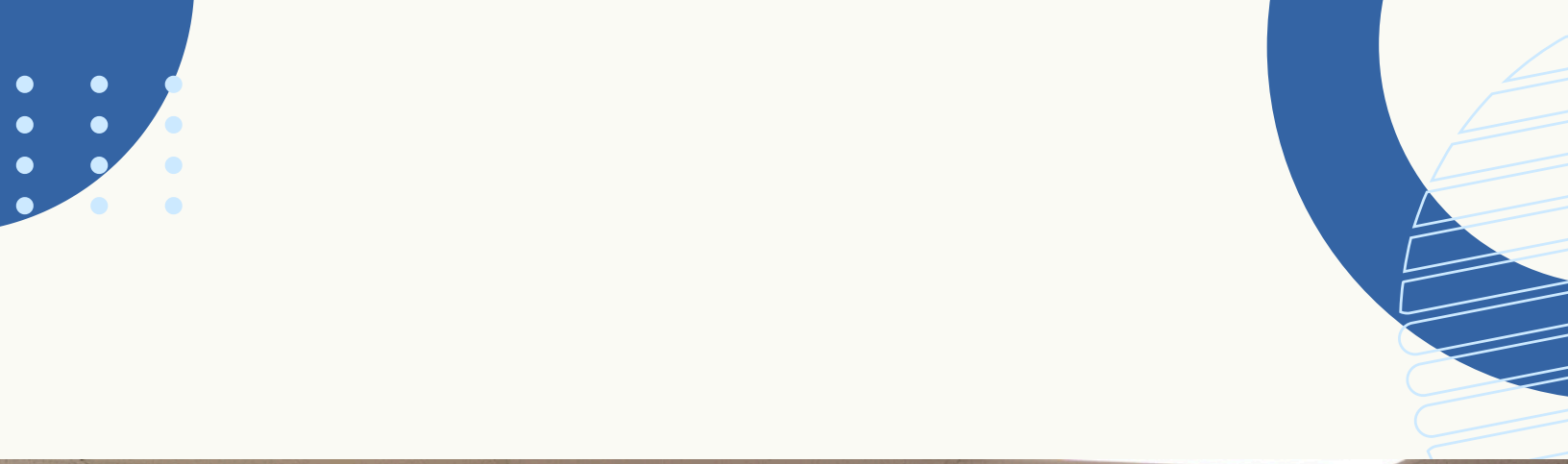


## MESSAGE FROM PROGRAM COORDINATOR:

This year, we proudly launched the Sexual Assault Nurse Examiner (SANE) Program to enhance care and support for survivors of sexual violence. Through this program, we provide specialized, compassionate, and trauma-informed medical services while collecting forensic evidence critical for justice. The overwhelming support we've received from the community has been truly heartwarming and has reaffirmed the importance of this work. Your encouragement and generosity have enabled us to make a meaningful impact, ensuring survivors are treated with dignity and respect during their most vulnerable moments. Together, we're fostering healing and hope. Thank you for standing with us.

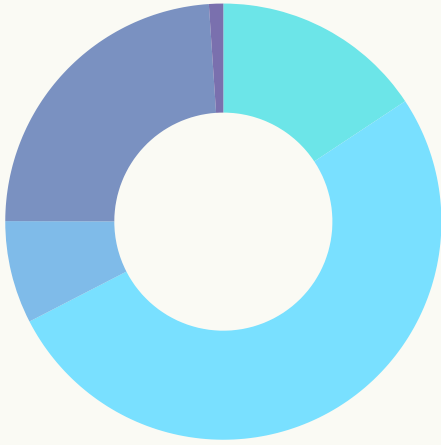
Melissa Maddox, RN  
SANE Program Coordinator





## **SANE PROGRAM RIBBON CUTTING - APRIL 2024**

# FINANCIALS



## Funding

- Appropriations - 15.69%
- Grants - 51.74%
- Fundraising - 23.90%
- Contributions - 7.61%
- Other - 1.06%

## Expenses

- Advocacy Services - 65.10%
- General Admin - 24.60%
- Special Events - 10.30%



# JUNIOR BOARD OF DIRECTORS



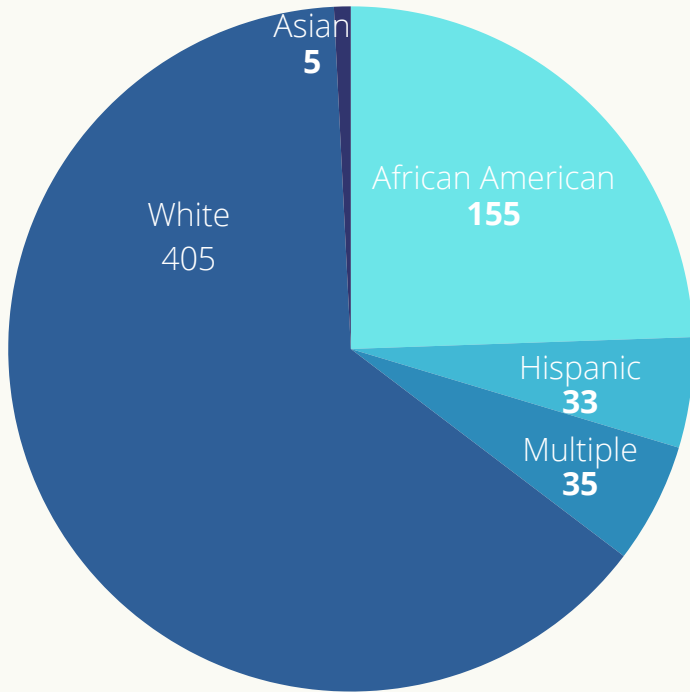
Abby McKay, President  
Kristien Pierce, Vice President  
Jessica Scarratt, Secretary

Caleb Bannin  
Lauren Callander  
Taylor Edwards  
Emily Harrell  
Kylie Harris  
Athena Hart  
Sarah Holland  
Kim Johnson

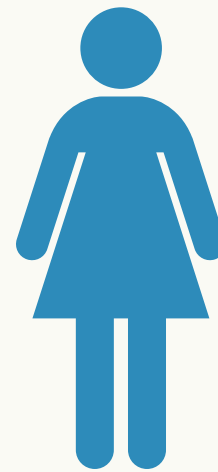
Macy Maddox  
Heather Oates  
Alex Rainey  
Lee Ross  
Anna Slay  
Mikhele Trice  
Lynn Whitfield

# WHO WE HELPED HEAL

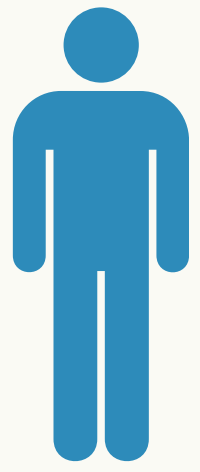
## RACE



## GENDER



FEMALE  
435



MALE  
199

# PREVENTION & OUTREACH



Students Educated in local schools  
(10,337)



Collaboration Meetings



MDT Annual Training



Facility Tours



Resource Fair/Tabling Events



Social Media Reach (7,000)



# WANT TO HELP?



A caring, supportive community is required to make a lasting impact in the lives of children. Many options are available for you to step up & join us in our mission to keep the children in our community safe & be the soft place to land when they are harmed. Here's how you can help:

- Report suspected child abuse to [1-800-252-5400](tel:1-800-252-5400)
- Make a [tax-deductible](#) donation to our center
- [Volunteer](#)
- [Attend](#) our events
- [Host](#) a third-party event
- Donate [in-kind](#) gifts or services
- Request a [training](#)
- [Follow us](#) on social media (Facebook & Instagram)



Southeast Alabama Child Advocacy  
Center  
110 Harmony Lane, Dothan, AL 36303  
(334) 671-1779  
[www.southeastcac.org](http://www.southeastcac.org)

